



# Empower Idaho 2022 Peer Support Conference

November 17, 2022

---

## *Welcome!*

---

For questions and assistance, email  
[aguida@jannus.org](mailto:aguida@jannus.org)  
[mwright@jannus.org](mailto:mwright@jannus.org)





# Advocacy at the Idaho Legislature

Hillarie Hagen, LSW  
Idaho Voices for Children

# Agenda

---

The Idaho Legislature

---

---

Legislative Session Basics

---

---

Behavioral Health at the  
Legislature

---



Hillarie Hagen, LSW  
Health Policy Associate



**IDAHO KIDS  
COVERED**



# Introducing the Idaho Legislature

# Introduction to the Legislature

Idaho has a part time legislature which convenes yearly in January and ends (typically) in the spring.

There are 35 legislative districts, each with 2 House Reps and 1 Senator, resulting in 70 House Representatives and 35 Senators total.

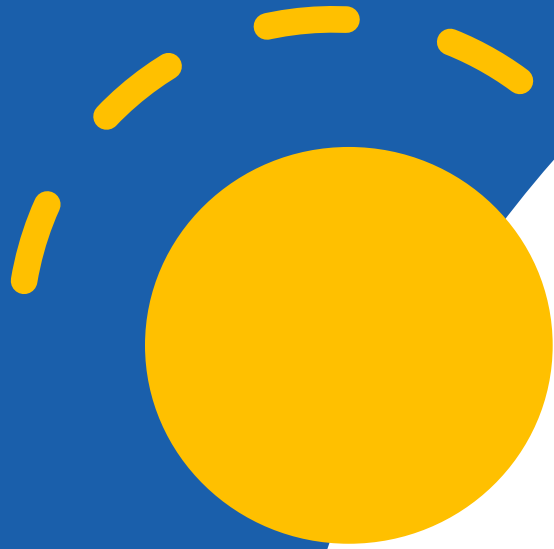
If you don't know your representatives you can look them up online by finding your district.

# Who is in Charge?

---

- Both chambers are controlled by Republicans in the Majority, Democrats are in the Minority.
- Leadership positions are chosen by legislators of the party, and will change following the elections this fall.

	Senate	House of Representatives
Presiding Officers	Lt. Governor Janice McGeachin President of the Senate	Speaker Scott Bedke Speaker of the House
Majority Leadership	Senator Chuck Winder President Pro Tempore  Senator Kelly Anthon Majority Leader  Senator Abby Lee Assistant Majority Leader	Representative Mike Moyle Majority Leader  Representative Megan Blanksma Assistant Majority Leader
Minority Leadership	Senator Michelle Stennett Minority Leader  Senator Grant Burgoyne Assistant Minority Leader	Representative Illana Rubel Minority Leader  Representative Lauren Necochea Assistant Minority Leader



# Legislative Session Basics



# Key Committees to Watch- Behavioral Health

Joint Finance and Appropriations Committee (JFAC): This committee approves agency/departments budgets and is crucial to watch for funding decisions. This committee is made up of members from both chambers.

Health and Welfare (House and Senate): These committees produce legislation that will impact children's health coverage and other core IKC issues. Their business covers Medicaid, SNAP, CHIP, and other child health services.

# Tracking Bills and Committees

Committees may meet for discussion on specific legislation or items. There are two types of hearings that the committee can hold.

A Print Hearing is often the first point of introduction, where the committee decides to 'print' legislation as an official bill or kill it.

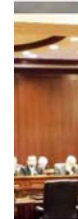
A Bill Hearing is larger and involves participation from the public and interested parties. The end result of this hearing is the bill being passed (with or without recommendation), sent to amending order, or killed.

# Check the Agenda

- Committee agendas are typically posted the night before or day of business, check the legislature website to see what's on the agenda and when the committee will be meeting.
- To keep close track you can subscribe to email alerts to have the agenda sent directly to your inbox.

## Committees

If Representatives has 14 committees and the Senate has 10. When appointments of committee members are made, it is customary to appoint a member of the majority party as chairman.



House Standing  
Committees



Joint Standing  
Committees



Interim &  
Committees



Legislative Compensation  
Committee



Testifying Before Legislative  
Committees



Legislative  
Committees

# Watch the Legislature from Home

- Idaho Public Television provides livestreams of House and Senate floor debate as well as committee sessions.
- <https://www.idahoptv.org/shows/idahoinsession/> provides multiple viewing options. Utilize these channels to make sure you stay in the loop!

The logo for "IDAHO IN SESSION" is displayed in a gold, serif font. The word "IDAHO" is on the top line, "IN" is a smaller word in the middle, and "SESSION" is on the bottom line. Below the text is a decorative blue wavy line.

IDAHO  
IN  
SESSION

# Testifying in Committee

When the Bill Hearing begins in committee the Chairman will announce that the bill is up, the legislative sponsor will be the first to testify.

Testimony then opens to the public who will be called on for 2-3 minutes of testimony each in the order that they signed up. You can sign up in person or register to testify virtually using the form under the committee link.

When testimony is complete the committee votes on the fate of the bill.



# Basics of Testimony

When possible bring a printed version of your testimony to submit for the committees records.

When beginning testimony thank the Chairman and committee, and address all testimony and or questions through the Chairman.

Limit testimony to 3 minutes (300 words) and be sure to state whether you are for or against the bill and why. Prepare for questions from the committee.

# Contacting Legislators

- Legislature.Idaho.gov has a simple contact page that can direct you to a legislator by name, committee, or district.
- Once you have found the legislator, their email and phone number will be available to you to utilize for contact.

**Contacting Legislators**

---

CONTACT BY NAME	CONTACT BY DISTRICT	CONTACT BY COMMITTEE	DISTRICT MAP	INFORMATION CENTER	CONGRESSIONAL DELEGATION
-----------------	---------------------	----------------------	--------------	--------------------	--------------------------

Enter Last Name: \*

---

## Representative Lauren Necochea (D)



[LNecochea@house.idaho.gov](mailto:LNecochea@house.idaho.gov)

**Assistant Minority Leader**

**District 19**

House Seat A

2<sup>nd</sup> term

PO Box 1634, Boise, ID, 83701

Home (208) 332-1203

Statehouse (208) 332-1078 (Session Only)

**Committees:**

[Commerce & Human Resources](#)

[Environment, Energy & Technology](#)

[Revenue & Taxation](#)

[Ways & Means](#)

# Meeting with Legislators

---

You can arrange to meet with your legislator by contacting them and scheduling an in person visit to their office or a meeting via Zoom.

---

Plan for 15 minutes and dress professionally. Practice a 30 second 'elevator pitch' in advance to succinctly deliver your message and ask. Bring resources if helpful.

---

This is a professional meeting to discuss important issues, even if disagreement arises refocus the conversation to your priorities and emphasize why they align with the legislators interest. Always thank them for their time and offer follow up to questions you are unable to answer.



# Behavioral Health in the Legislature

# Mental Health Needs in Idaho are High and Continue to Grow

About 1 in 4 Idahoans is impacted by having a mental or behavioral health condition<sup>5</sup>. This ranges from Idahoans with Depression or Anxiety, to Idahoans with Severe Mental Illness. Idaho's rate is the highest in the entire country.

Nearly 70,000 Idahoans had SMI diagnoses in 2019, experts expect many are unreported<sup>6</sup>.

Data shows over half of these Idahoans received **no** mental health treatment. Idaho ranks 48 out of 50 states in terms of providing access to mental health services<sup>7</sup>.





# Troubling Trends for Kids

In 2020 nearly 20% of Idaho teens had depression, the second highest rate in the entire country<sup>8</sup>.

55% of these teens received **no** mental health treatment<sup>9</sup>.

Underscoring all of this, 24,000 children in Idaho are uninsured, preventing them from accessing crucial services to keep them healthy<sup>10</sup>.

# How Does the Legislature Come into Play?

- The Idaho legislature sets yearly budgets for programs like Medicaid that provide mental and behavioral health services for eligible Idahoans.
- They also can pass policy instructing the Department of Health and Welfare to strengthen or implement new versions of this program.
- Recently, the Legislature and Governor approved funding for more in patient care, diversion programs and crisis supports.

# Key Behavioral Health Topics this Session

Medicaid budget-As always one of the largest behavioral health topics every session is the budget and ensuring its timely passage. This includes traditional and expanded Medicaid.

Workforce, lack of providers, reimbursement rates, long wait times

Expanding on Idaho Behavioral Health Council investments

Rising depression rates in youth and postpartum women

## Be Involved!

Subscribe:

Idahokidscovered.org

- Email updates
- Reports
- Action Alerts
- Monthly webinars
- Action opportunities

SHARE YOUR STORY!



Hillarie Hagen

208-918-9026 - [hhagen@jannus.org](mailto:hhagen@jannus.org)

# Questions and Answers





# Sources

1. *Prevalence Data 2021*. (2021). Mental Health America. Retrieved October 27, 2021, from <https://www.mhanational.org/issues/2021/mental-health-america-prevalence-data>.
2. *2018-2019 NSDUH State-Specific Tables / CBHSQ Data*. (2020, December 15). Substance Abuse and Mental Health Services Administration. Retrieved October 27, 2021, from <https://www.samhsa.gov/data/report/2018-2019-nsduh-state-specific-tables>.
3. *2018-2019 NSDUH State-Specific Tables / CBHSQ Data*. (2020, December 15). Substance Abuse and Mental Health Services Administration. Retrieved October 27, 2021, from <https://www.samhsa.gov/data/report/2018-2019-nsduh-state-specific-tables>.
4. *2020 Ranking the States: MHA Child Mental Health Rankings*. (2021). Mental Health America. Retrieved October 27, 2021, from <https://www.mhanational.org/issues/2020/ranking-states>.
5. *2020 Ranking the States: MHA Child Mental Health Rankings*. (2021). Mental Health America. Retrieved October 27, 2021, from <https://www.mhanational.org/issues/2020/ranking-states>.
6. D. (2021, July 22). *Idaho Kids Health Coverage Snapshot*. Idaho Kids Covered. Retrieved October 27, 2021, from <https://idahokidscovered.org/idaho-kids-health-coverage-snapshot/>.
7. *Milliman Idaho Expansion Presentation - December 2020*. (2020). Idaho Department of Health and Welfare-Reports and Presentations. Retrieved October 27, 2021, from <https://publicdocuments.dhw.idaho.gov/WebLink/DocView.aspx?id=14568&dbid=0&repo=PUBLIC-DOCUMENTS&cr=1>.